

Lisa checks her horse Flash's mouth weekly in case of injuries. She does the examination calmly, not to scare the horse.

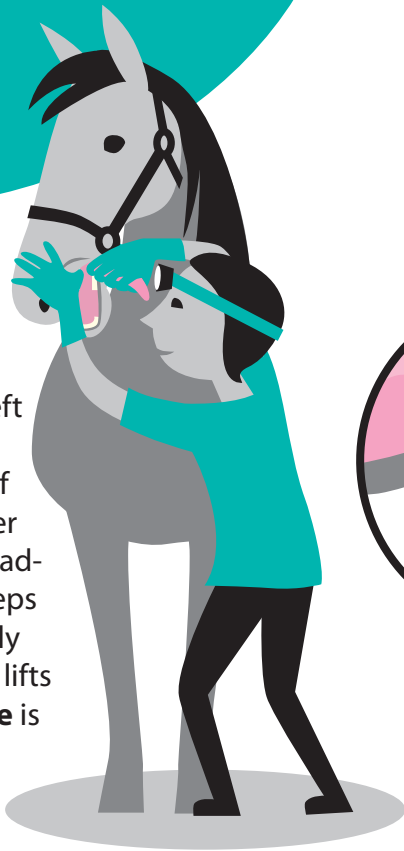
Mouth examination instructions

by DVM Kati Tuomola

Illustration: Satu Cozens / Kummakko-Design

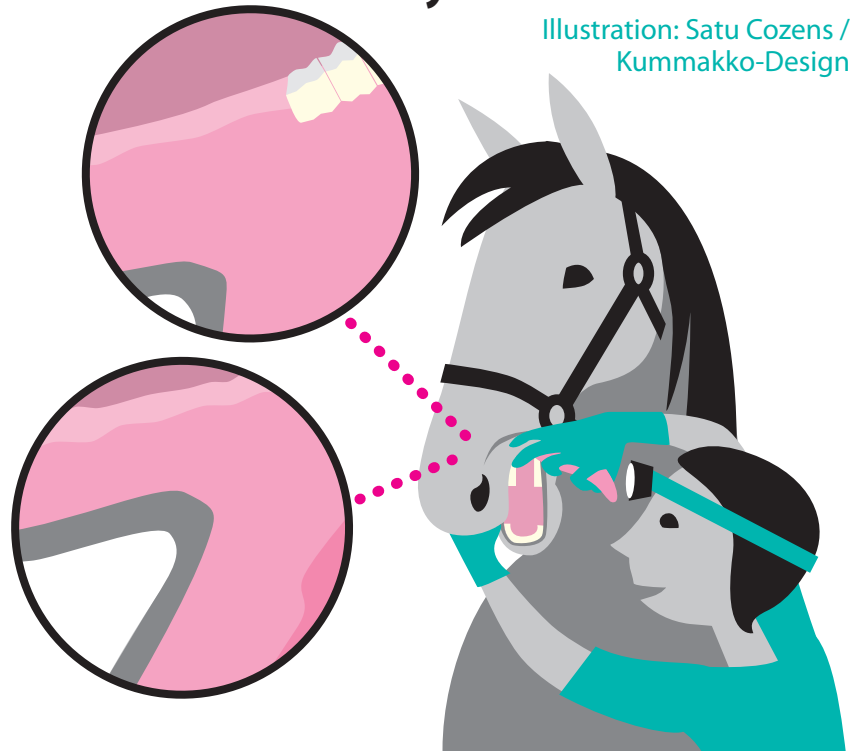
1

Standing on the left side of her horse, Lisa takes a hold of his tongue with her right hand. Her headlight is on. Lisa keeps her left hand gently over the nose and lifts the lip. The **tongue** is checked.



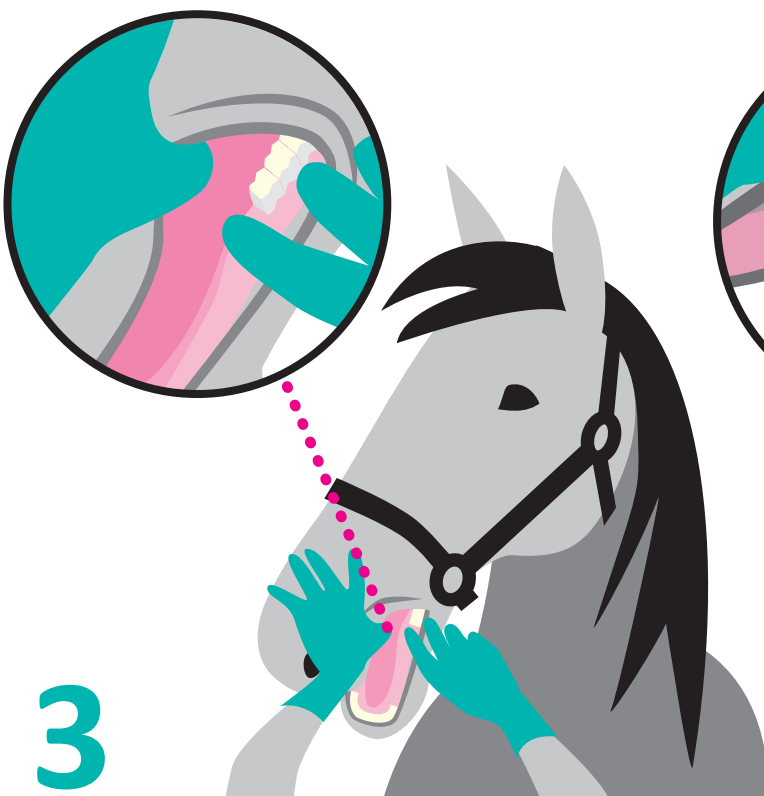
2

Lisa checks the **right lip commissure** and **cheek on the opposite side**. If necessary, she holds the lip commissure with her left hand while holding the tongue. She also checks the **hard palate**.



3

Next she checks the **left bar of the mandible**. She palpates the bony ridge and looks especially at the area in front of the first big molar tooth.



4

Lastly she checks the **left outside lip commissure** by extending the lip. After this she repeats the examination from the other side.

